



Conformity Assessment of Telecommunication Equipment

January 2011

Office of the National Broadcasting and Telecommunications Commission
87 Phaholyothin 8 Rd. Samsennai, Phayathai, Bangkok 10400
Tel: 0 2271 0151 – 60 web site: www.nbtc.go.th

1. PREFACE

The National Telecommunications Commission (NTC) (Currently National Broadcasting and Telecommunications Commission - NBTC) has issued two Notifications regarding conformity assessment of telecommunication equipment:

- NTC Notification on conformity assessment of telecommunication equipment;
- NTC Notification on conformity assessment procedures of telecommunication equipment done by the Office of NTC (Currently Office of NBTC).

“conformity assessment” means the process to ensure that technical characteristics of telecommunication equipment conform to the technical standard or technical requirement prescribed by the NTC/NBTC. It may include testing, registration, certification, and other related activities.

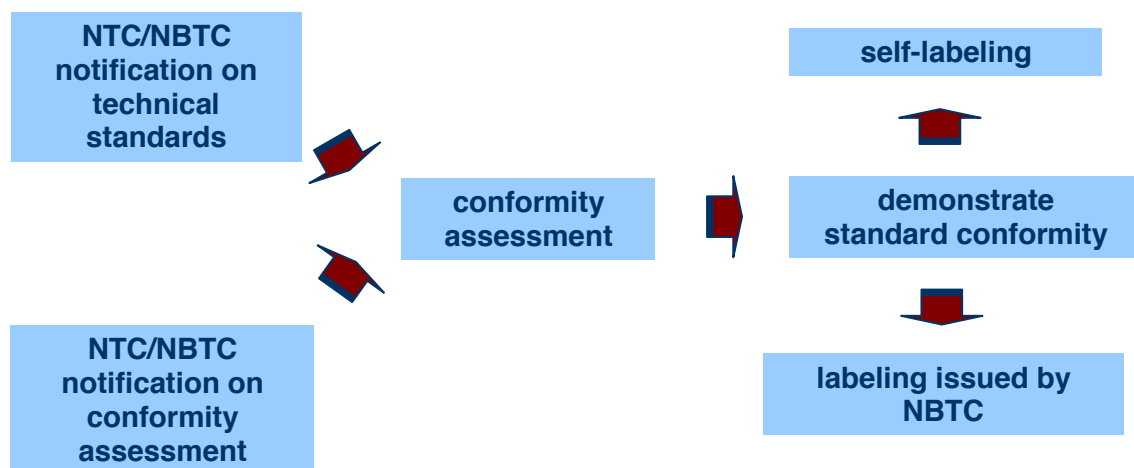


Figure 1 conformity assessment procedures

In addition, the NTC has issued a notification on EMF exposure standard (NTC TS 5001-2550) and a notification on rules and measures for regulating EMF exposure to human, in order to ensure safety and protect any hazards to human from electromagnetic radiation exposure caused by utilizing radiocommunication equipment. The notifications indicate limits and measurement procedures for EMF exposure assessment for radiocommunications equipment operating in 9 kHz – 300 GHz band, as well as rules and measures for regulating EMF exposure.

This document had been issued by the Office of National Broadcasting and Telecommunications Commission (the Officer of NBTC) as a manual for suppliers in order to introduce and describe procedures for conformity assessment of telecommunication equipment as required by NTC/NBTC Notifications.

2. Classification of Telecommunication Equipment

2.1 Telecommunication equipment which are subjected to conformity assessment. These equipment can be classified into two classes:

2.1.1 **Class A equipment** is the telecommunication equipment for which supplier has to demonstrate its conformity against prescribed technical standard or technical requirement by testing performed by relevant conformity assessment body (CAB), and then the equipment has to be registered with the Office of NBTC.

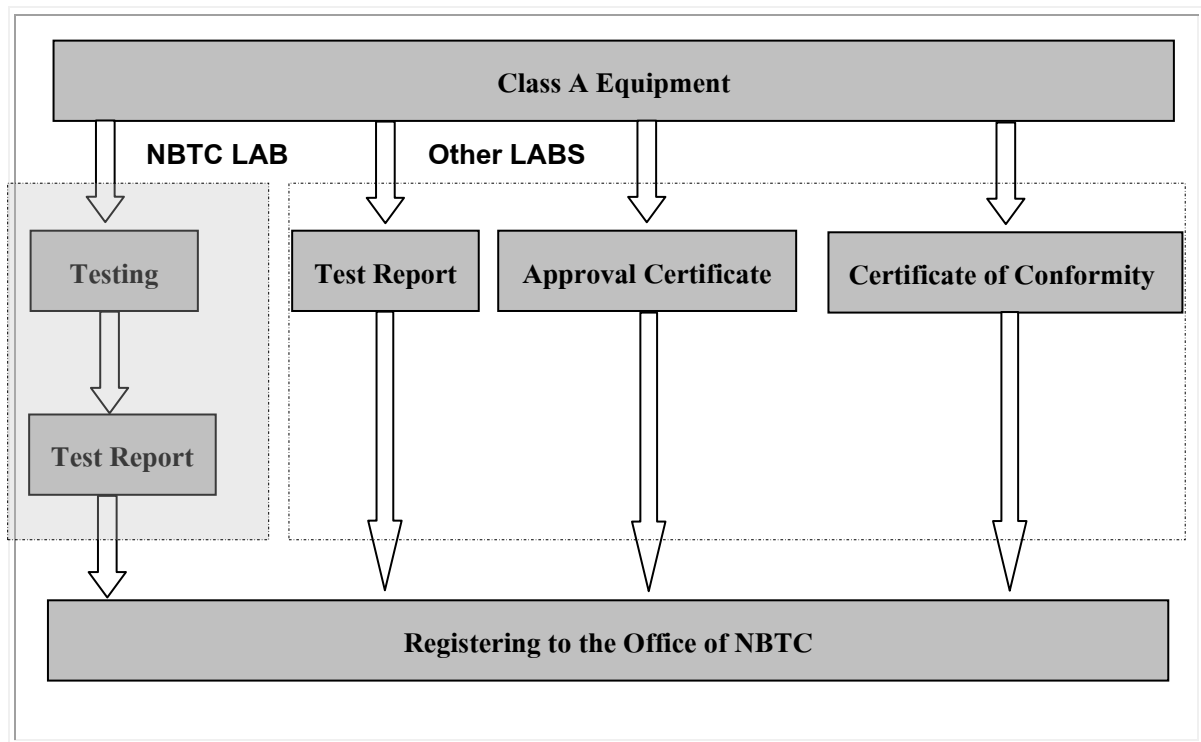


Figure 2 Conformity assessment of Class A equipment

List of telecommunication equipment	Applicable technical standard/requirements
Land mobile radiocommunication equipment (general)	NTC TS 006-2548 (Microphone)
	NTC TS 007-2548 (Radio Control)
Equipment for satellite communications	NTC TS 005-2548 (GMPCS)
	NTC TS 1019-2551 (antenna earth station)
Other radiocommunication equipment allowed by the NTC	NTC TS 1011-2549 (Vehicle Radar)
	NTC TS 1010-2550 (licensed RFID)
Power line communications equipment	NTC TS 2002-2551 (Broadband PLC – In-building)

Table 1 Example of Class A equipment

2.1.2 **Class B equipment** is the telecommunication equipment for which supplier has to demonstrate its conformity against prescribed technical standard or technical requirement by testing performed by relevant conformity assessment body (CAB), and then the equipment has to be certified by the Office of NBTC.

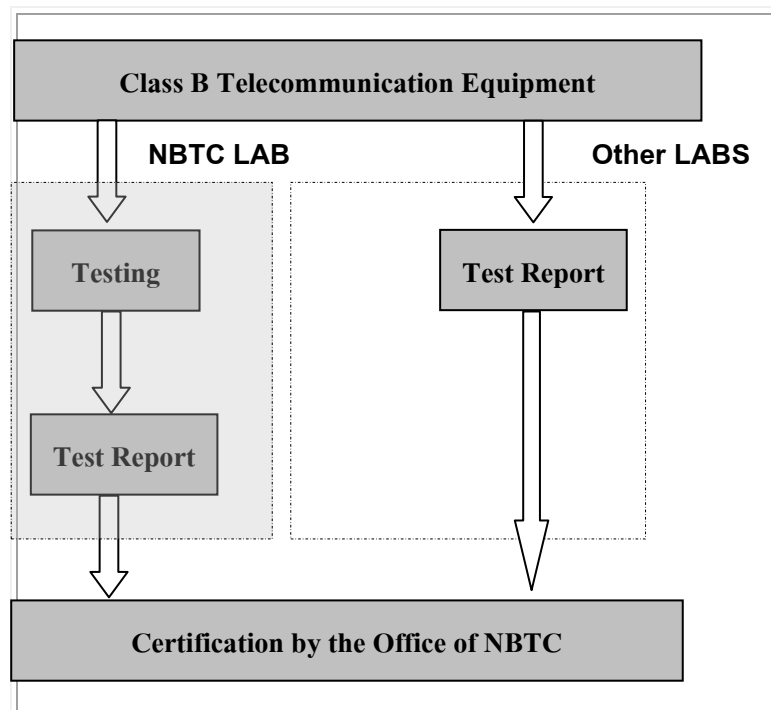


Figure 3 Conformity assessment of Class B equipment

List of telecommunication equipment	Applicable technical standard/requirements
Equipment for radio amateur	NTC TS 1018-2550
Land mobile radiocommunication equipment (general)	NTC TS 1001-2553 (VHF/UHF)
	NTC TS 1002-2553 (CB78/245)
	NTC TS 1009-2549 (Trunked)
	NTC TS 1024-2552 (VHF/UHF Digital)
Cellular equipment	NTC TS 1004-2553 NTC TS 1008-2549 NTC TS 1014-2552 NTC TS 1015-2552 NTC TS 1016-2549 NTC TS 1017-2549
Maritime mobile radiocommunication equipment	NTC TS 1020-2550 (CB27)
	NTC TS 1021-2550 (VHF)
	NTC TS 1022-2552 (MF/HF)
Aeronautical mobile radiocommunication equipment	NTC TS 1003-2553 (VHF VOR)
	NTC TS 1023-2552 (VDL)
Wide-Area Broadband Wireless Access equipment (BWA)	NTC TS 1013-2552 (BWA)

Table 2 Example of Class B Equipment

2.2 Telecommunication equipment subject to Supplier 's Declaration of Conformity (SDoC) scheme is the equipment for which the NTC/NBTC had prescribed technical standard or technical requirement, but the NTC/NBTC does not require such equipment to be registered or certified. In this case, supplier has an obligation to provide written attestation that the equipment conforms to such standard or requirement using Supplier's Declaration of Conformity (SDoC) form.

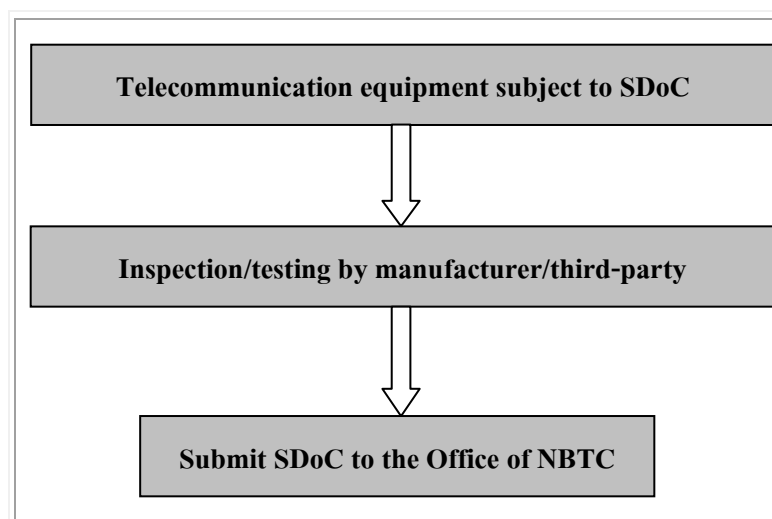


Figure 4 Supplier's Declaration of Conformity: SDoC

List of telecommunication equipment	Applicable technical standard/requirements
Telecommunication terminal equipment (TTE) <ul style="list-style-type: none"> - telephone set - facsimile equipment - modem - data terminal equipment - PABX - xDSL equipment 	NTC TS 3001-2550 (EMC)
	NTC TS 4001-2550 (electrical safety)
Optical communication system	NTC TS 2001-2550
Other radiocommunication equipment allowed by the NTC	NTC TS 1010-2550 (license-exempt RFID)
	NTC TS 1012-2551 (RLAN,Wi-Fi)
Power line communications equipment	NTC TS 2002-2551 (Narrowband PLC)
Microwave Fixed Link	Requirement according to NTC Frequency Plans
Low power radiocommunication equipment or short range device; e.g. <ul style="list-style-type: none"> - wireless microphone - cordless phone - Radiocommunication equipment used in radar applications - Bluetooth device - Medical radio device etc. 	Requirements according to Clause 2 of NTC Notification on License-exempt radiocommunication equipment/station

Table 3 Examples of telecommunication equipment subject to SDoC

2.3 Telecommunication equipment not subject to conformity assessment under these NTC Notifications:

- Telecommunication equipment used for educational purpose or used in laboratory by educational or education-related institutes;
- Telecommunication equipment used for espionage purpose by national security agencies;
- Telecommunication equipment used for scientific research and ecological purpose, including animal tracking, by institutes/agencies dealing with education, environment, or ecology;
- Telecommunication equipment used by UN specialized agencies;
- Telecommunication equipment used by foreign ship station or aircraft station, which is already pre-installed in those vessels;
- Telecommunication equipment temporarily imported as personal effects without commercial purpose, and will be exported when no longer required.

2.4 Telecommunication equipment for which these NTC/NBTC Notifications will not apply:

- Telecommunication equipment used within telecommunication network which is not a terminal equipment (e.g. exchange);
- Telecommunication cable, fiber optic cable.

2.5 In addition, NTC notification on rules and measures for regulating EMF exposure to human has categorized radiocommunication equipment (Telecommunication equipment which intentionally radiate radio frequencies) into three types, in which type classification and their regulations are as follows

- **Type 1**. Radiocommunication equipment operating within 20 cm from human body in normal operating condition. (e.g. handheld cellular mobile terminal)
 - EMF exposure assessment requirements: Radiation exposure must be assessed by the Specific Absorption Rate (SAR) measurement
 - The Declaration of Conformity (DoC) must be submitted to the Office of NBTC (along with copy SAR test report in case of

registration (Class A equipment) or certification (Class B equipment))

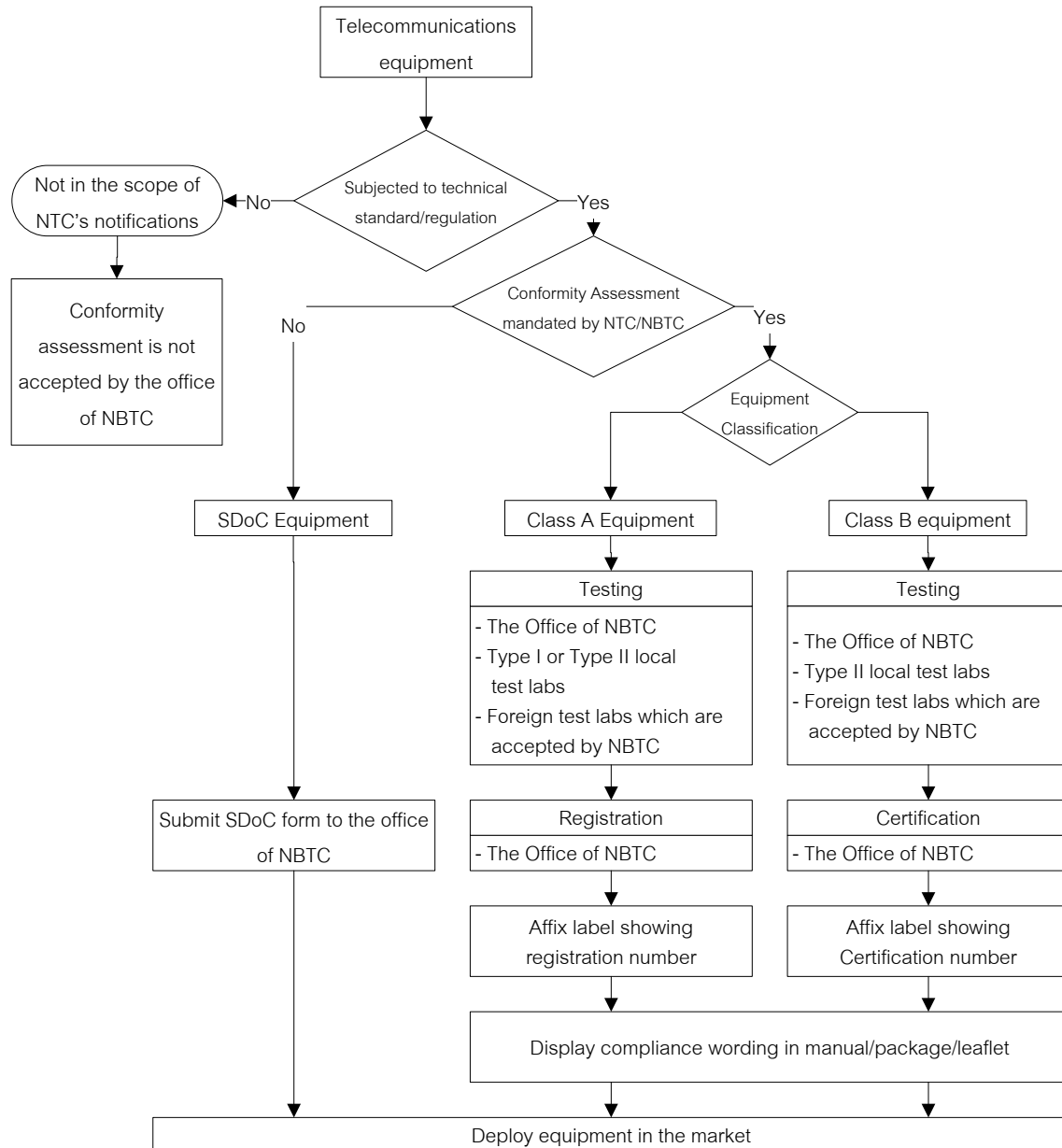
- **Type 2.** Radiocommunication equipment operating further away more than 20 cm from human body in normal operating condition (e.g. cellular mobile terminal installed in vehicle)
 - EMF exposure assessment requirements: Radiation exposure must be assessed (by EMF testing, or calculation)
 - The Declaration of Conformity (DoC) must be submitted to the Office of NBTC (along with copy EMF test report or calculation in case of registration (Class A equipment) or certification (Class B equipment))

- **Type 3.** Radiocommunication equipment that has been permanently installed in fixed location and has wide area of radiation coverage (e.g. cellular base station).
 - EMF exposure assessment requirements: EMF assessment must be conducted and results must be submitted to NBTC before installation.

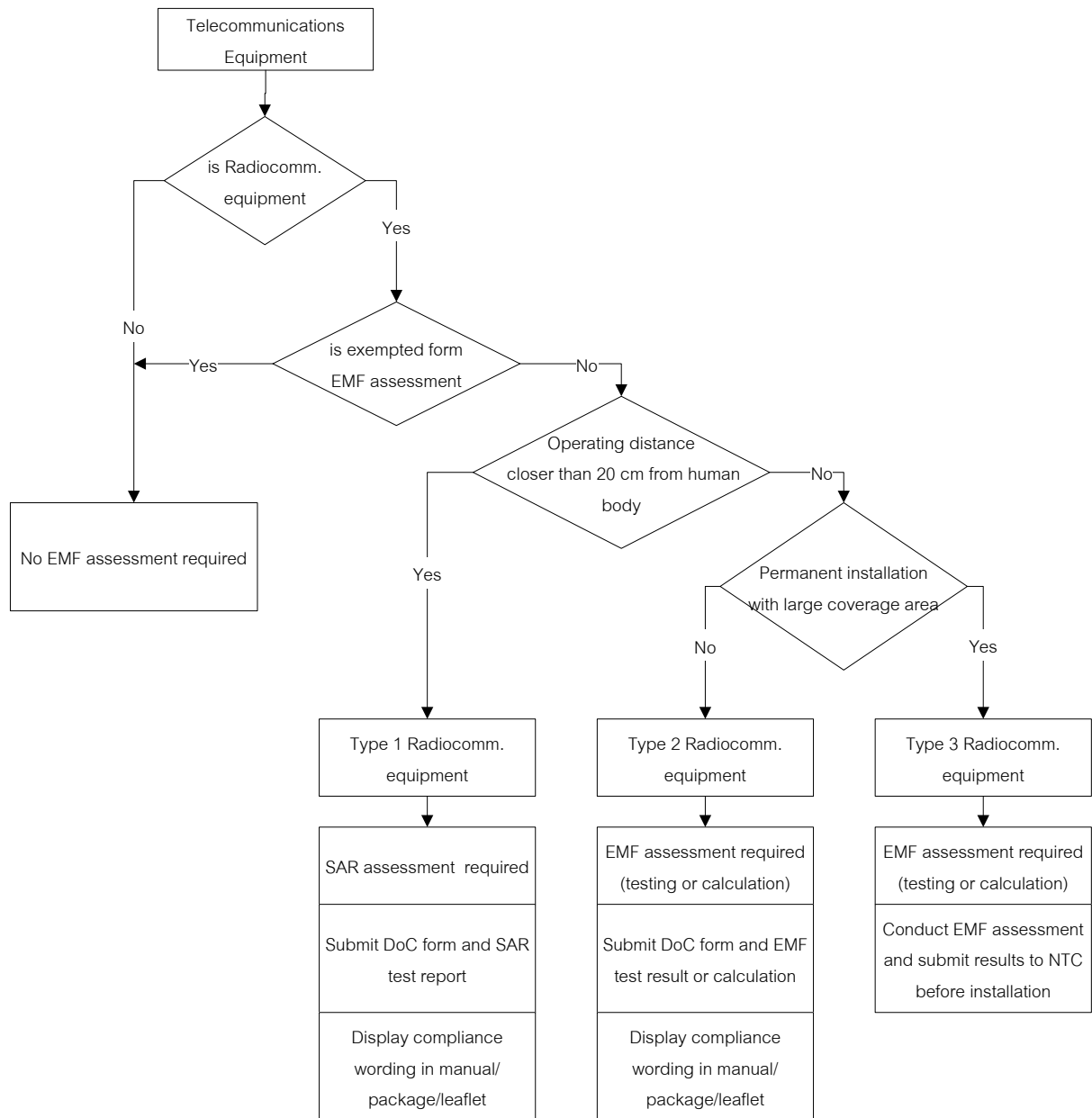
- **Exempted equipment.** Following are radiocommunication equipment which are exempted from radiation exposure assessment requirement.
 - Radiocommunication equipment which are subjected to be use for national security
 - Two-way radio push-to-talk radiocommunication equipment which are subjected to be used by trained professional such as emergency personnels, firemen, polices, military units, etc
 - Radiocommunication equipment on board ship or aircraft
 - Point-to-point fixed link station operating higher than 2GHz with transmission power not higher than 2 W
 - Radiocommunication equipment which has transmission power not higher than 100 mW e.i.r.p.

3. Conformity assessment of telecommunications equipment

3.1 Classification of telecommunications equipment according to NTC notification on conformity assessment of telecommunication equipment.



3.1 Classification of telecommunications equipment according to NTC notification on rules and measures for regulating EMF exposure to human



3.4 Organizations relevant to Conformity Assessment Procedures

		The Office of NBTC	Type I test lab	Type II test lab	Foreign test lab accepted by NBTC
1) Testing	Class A equipment	✓	✓	✓	✓
	Class B equipment	✓		✓	✓
	SDoC equipment	✓	✓	✓	✓
2) Registration		✓			
3) Certification		✓			

- 1) The Office of NBTC provide testing service with the scope cover RF requirements of telecommunications equipment
- 2) There are 2 local test labs licensed by NTC,
 - 2.1) PTEC: Licensed as Type II test lab: scope of testing covers EMC and Electrical Safety
 - 2.1) EEI: Licensed as Type II test lab: scope of testing covers EMC and Electrical Safety
- 3) The Office of NBTC accepts test report from foreign lab in accordance with rules defined by NBTC

4. The office of NBTC conformity assessment procedures

4.1 Testing

4.1.1 Required documents

	Detail	Remark (✓=Yes) (x=No)
1	Eligibility documents (copy of juristic person's registration/copy of national ID card)	
2	Sample of Equipment with complete accessories for testing	
3	Completely filled application form (Vor-Thor 01)	
4	Product Catalogue	
5	Technical Specifications	
6	Operation Manual/User guide/User manual	
7	Maintenance Manual / Service Manual / Testing Manual	
8	Circuit Diagram	
9	Software (if applicable)	
10	Copy of License to trade radiocommunication equipment	
11	Copy of License to make/import radiocommunication equipment	
12	Copy of bill of lading	

4.1.2 fee 20,000 Baht (VAT not included)

4.1.3 application form (Vor-Thor 01)

4.1.4 contact information

Telecommunication Technology and Engineering Bureau
The Office of National Broadcasting and Telecommunications
Commission

87 Phaholyothin 8 Rd. (Soi Sailom)

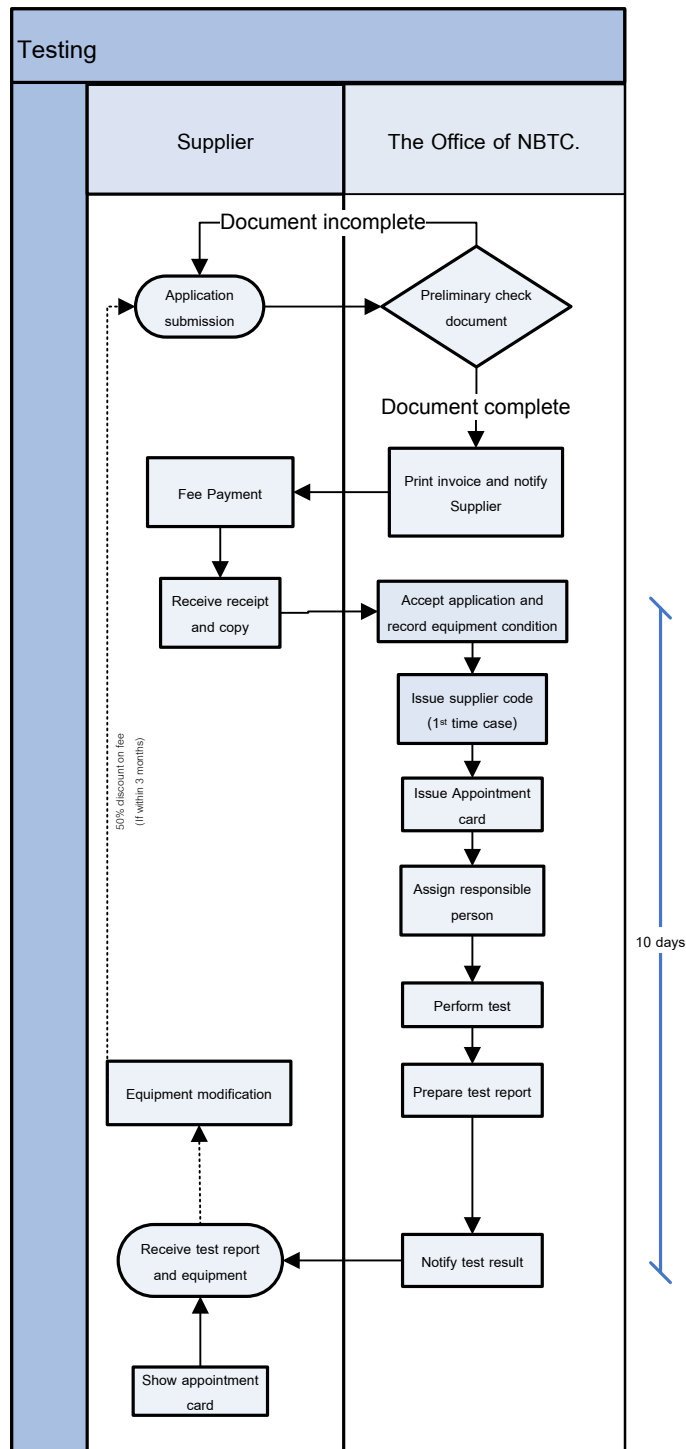
Samsennai, Phayathai, Bangkok 10400

Tel. 0 2271 0151 – 60 ext. 321, 322

Fax. 0 2279 2273

Email: standard@nbt.go.th

4.1.5 Testing procedure



4.2 Registration (Class A equipment)

4.2.1 Required documents

	Detail	Remark (✓=Yes) (×=No)
1	Eligibility documents (copy of Juristic person's registration/copy of national ID card)	
2	Completely filled application form (Vor-Thor 02)	
3	Product Catalogue Technical Specifications	
4	Documents to demonstrate conformity <ul style="list-style-type: none"> - Test Report - Approval Certificate - Certificate of Conformity 	
5	EMF Declaration of Conformity (DoC) form and supporting documents (as applicable – see Section 2.5)	
6	Copy of NTC's Approval Certificate (if applicable)	
7	Accreditation Certificate of testing laboratory	
8	Equipment's photograph	

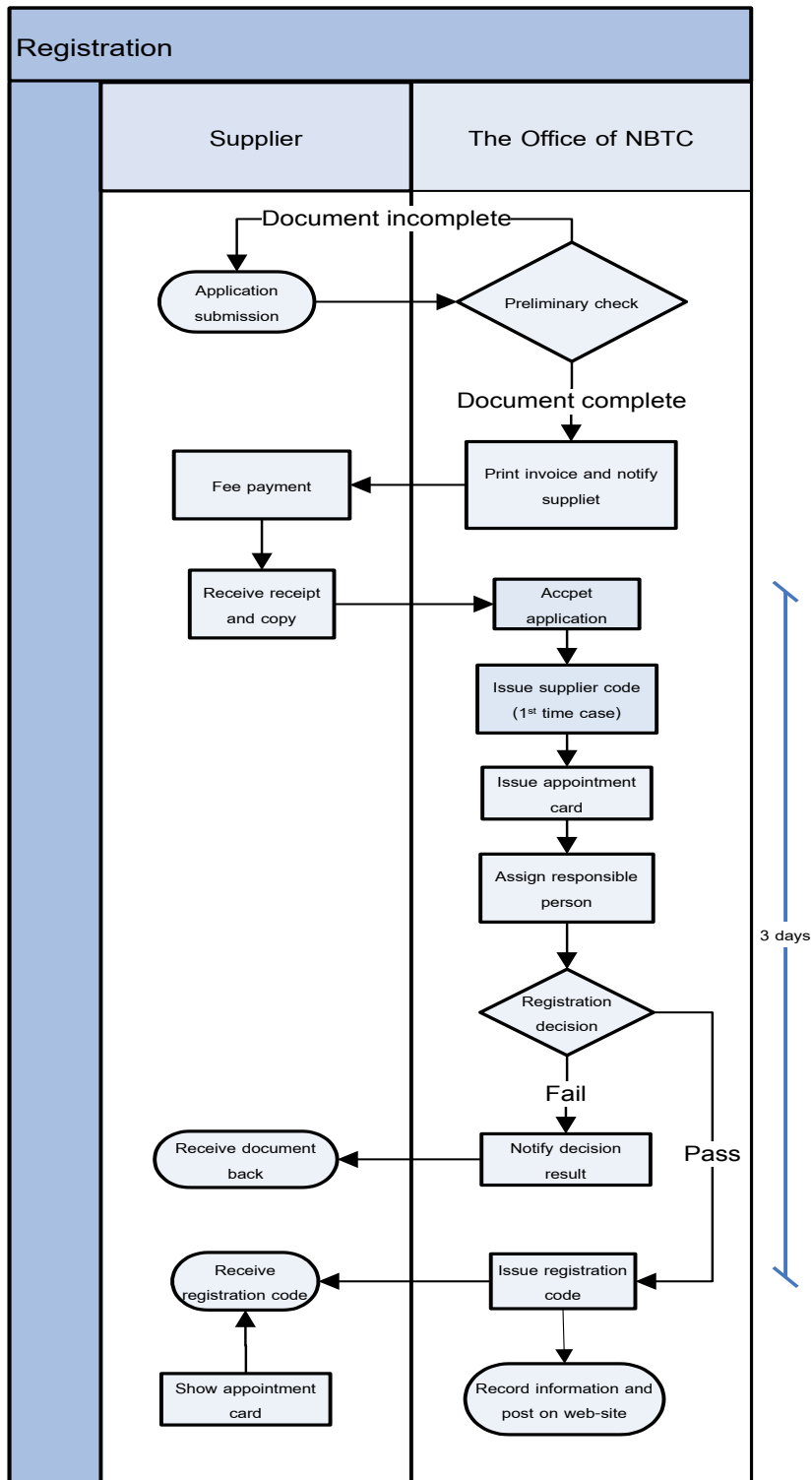
4.2.2 fee 1,000 Baht (VAT not included)

4.2.3 application form (Vor-Thor 02)

4.2.4 contact information

Telecommunication Technology and Engineering Bureau
The Office of National Broadcasting and Telecommunications
Commission
87 Phaholyothin 8 Rd. (Soi Sailom)
Samsennai, Phayathai, Bangkok 10400
Tel. 0 2271 0151 – 60 ext. 321, 322
Fax. 0 2279 2273
Email: standard@nbt.go.th

4.2.5 Registration procedure



4.3 Certification (Class B equipment)

4.3.1 Required documents

	Detail	Remark (✓=Yes) (×=No)
1	Eligibility documents (copy of juristic person's registration/copy of national ID card)	
2	Completely filled application form (Vor-Thor 03)	
3	Product Catalogue Technical Specifications	
4	Copy of Test Report	
5	Copy of NTC's Approval Certificate (if applicable)	
6	EMF Declaration of Conformity (DoC) form and supporting documents (as applicable – see Section 2.5)	
7	Accreditation Certificate of testing laboratory	
8	Equipment's photograph	

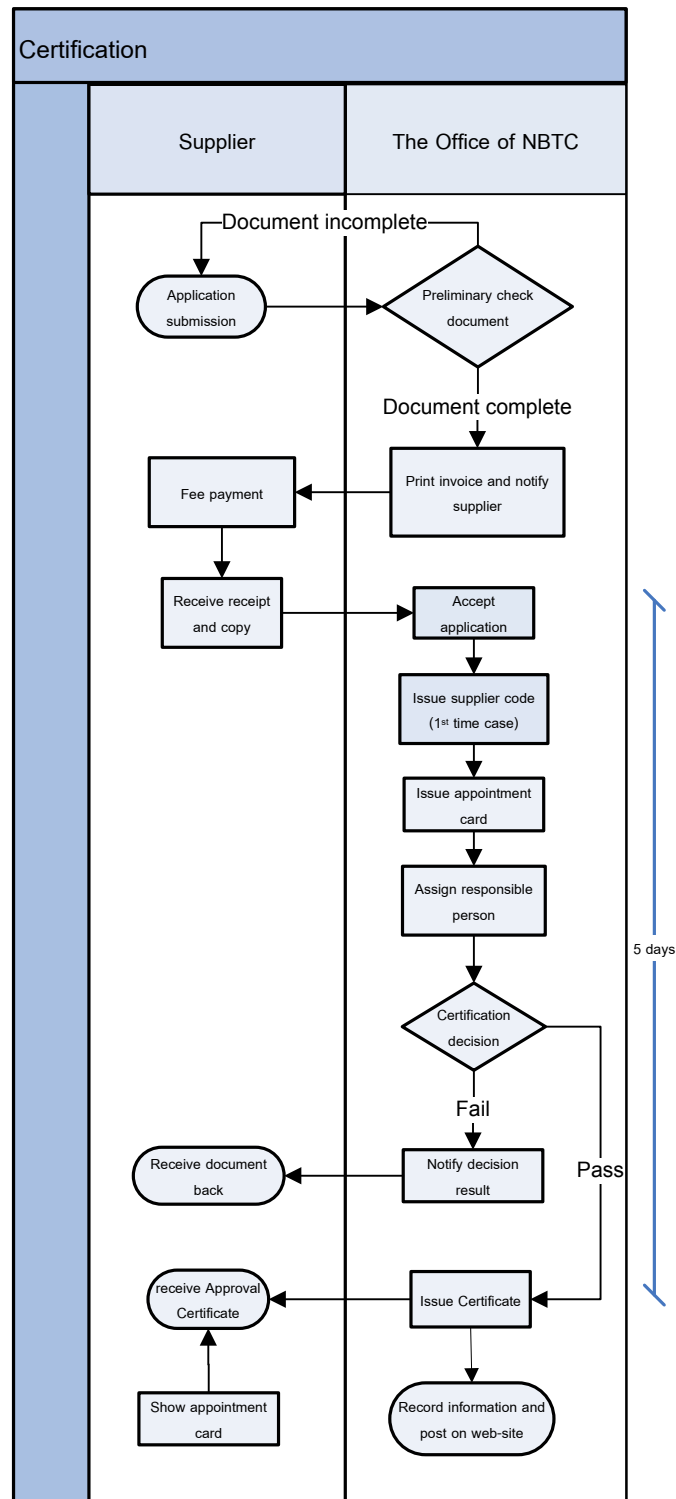
4.3.2 fee 5,000 Baht (VAT not included)

4.3.3 application form (Vor-Thor 03)

4.3.4 contact information

Telecommunication Technology and Engineering Bureau
The Office of National Broadcasting and Telecommunications
Commission
87 Phaholyothin 8 Rd. (Soi Sailom)
Samsennai, Phayathai, Bangkok 10400
Tel. 0 2271 0151 – 60 ext. 321, 322
Fax. 0 2279 2273
Email: standard@nbtc.go.th

4.3.5 Certification procedure



4.4 Testing & Registration (Class A Equipment)

4.4.1 Required documents

	Detail	Remark (✓=Yes) (×=No)
1	Eligibility documents (copy of juristic person's registration/copy of national ID card)	
2	Sample of Equipment with complete accessories for testing	
3	Completely filled application forms (Vor-Thor 01 and Vor-Thor 02)	
4	Product Catalogue	
5	Technical Specifications	
6	Operation Manual/User guide/User manual	
7	Maintenance Manual / Service Manual / Testing Manual	
8	Circuit Diagram	
9	Software (if applicable)	
10	EMF Declaration of Conformity (DoC) form and supporting documents (as applicable – see Section 2.5)	
11	Copy of License to trade radiocommunication equipment	
12	Copy of License to make/import radiocommunication equipment	
13	Copy of bill of lading	

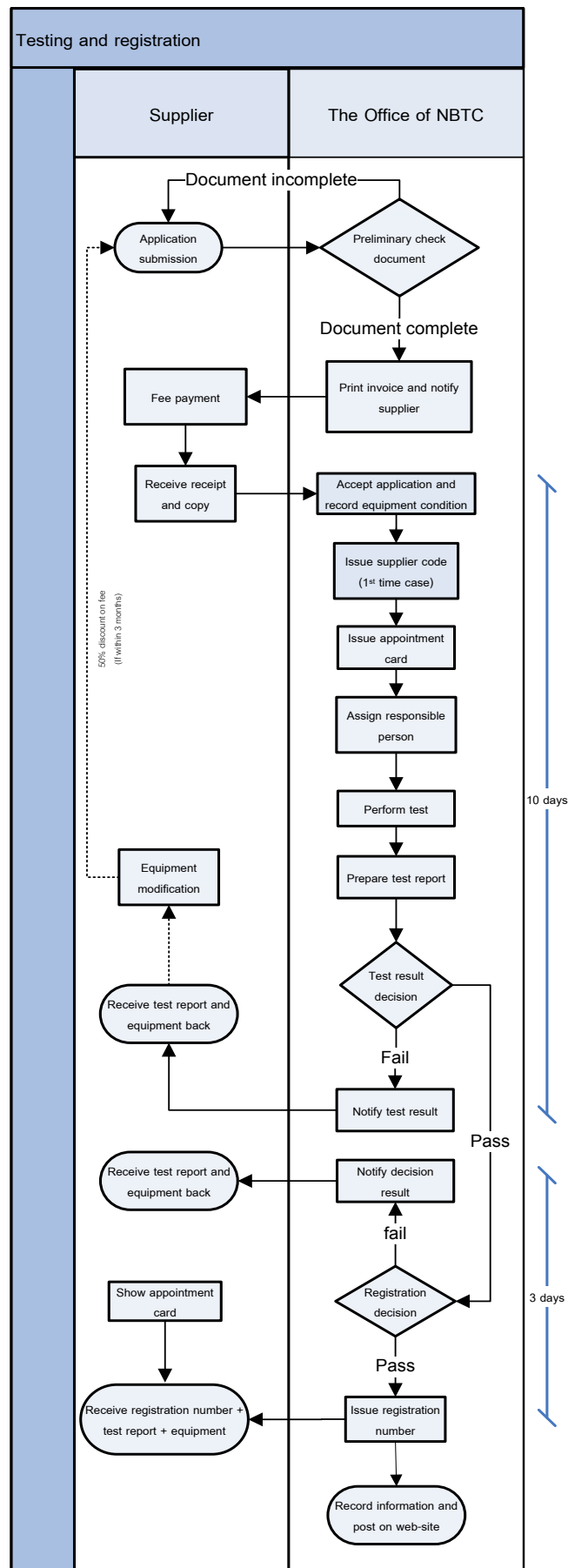
4.4.2 fee 21,000 Baht (VAT not included)

4.4.3 application forms (Vor-Thor 01 and Vor-Thor 02)

4.4.4 contact information

Telecommunication Technology and Engineering Bureau
The Office of National Broadcasting and Telecommunications
Commission
87 Phaholyothin 8 Rd. (Soi Sailom)
Samsennai, Phayathai, Bangkok 10400
Tel. 0 2271 0151 – 60 ext. 321, 322
Fax. 0 2279 2273
Email: standard@nbt.go.th

4.4.5 Testing and registration procedure



4.5 Testing & Certification (Class B equipment)

4.5.1 Required documents

	Detail	Remark (✓=Yes) (x=No)
1	Eligibility documents (copy of juristic person's registration/copy of national ID card)	
2	Sample of Equipment with complete accessories for testing	
3	Completely filled application forms (Vor-Thor 01 and Vor-Thor 03)	
4	Product Catalogue	
5	Technical Specifications	
6	Operation Manual/User guide/User manual	
7	Maintenance Manual / Service Manual / Testing Manual	
8	Circuit Diagram	
9	Software (if applicable)	
10	EMF Declaration of Conformity (DoC) form and supporting documents (as applicable – see Section 2.5)	
11	Copy of License to trade radiocommunication equipment	
12	Copy of License to make/import radiocommunication equipment	
13	Copy of bill of lading	

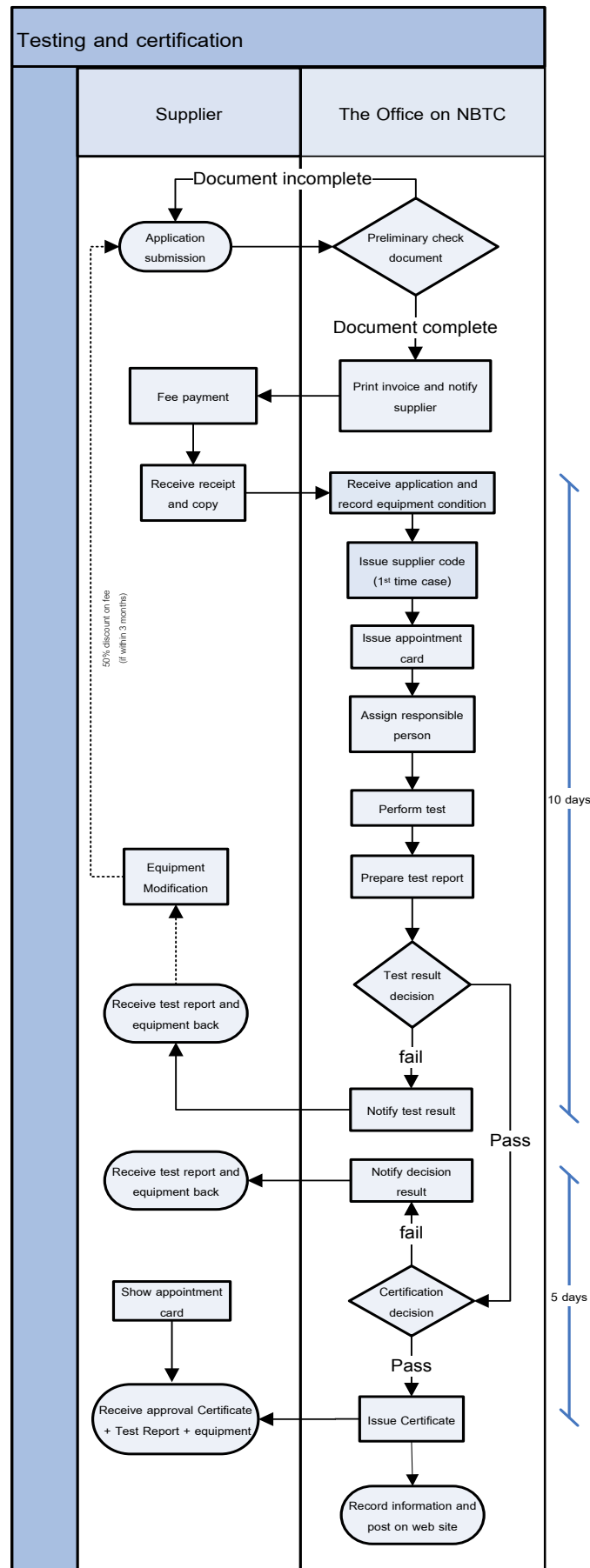
4.5.2 fee 25,000 Baht (VAT not included)

4.5.3 application forms (Vor-Thor 01 and Vor-Thor 03)

4.5.4 contact information

Telecommunication Technology and Engineering Bureau
The Office of National Broadcasting and Telecommunications
Commission
87 Phaholyothin 8 Rd. (Soi Sailom)
Samsennai, Phayathai, Bangkok 10400
Tel. 0 2271 0151 – 60 ext. 321, 322
Fax. 0 2279 2273
Email: standard@nbt.go.th

4.5.5 Testing and certification procedure



5. Labeling (label issued by office of NBTC)

5.1 Supplier has an obligation to show NTC/NBTC marking of conformity by affixing label on telecommunication equipment:

5.1.1 For Class A equipment:



where YYYYYY is registration number (6 digits)
ZZ is the year of registration (last 2 digits of the year)
XXXX is supplier code (4 digits)

5.1.2 For Class B equipment:



where AAAAAA is certification number (6 digits)
BB is the year of certification (last 2 digits of the year)
XXXX is supplier code (4 digits)

5.2 Labeling requirement

5.2.1 The label shall be Affixed on equipment, and shall be easily legible, visible and cannot be easily removed.



Figure 5 Equipment labeling

5.2.2 In case where label cannot be properly placed on the equipment (e.g. the equipment size is too small), the label shall be shown on the materials that come with the equipment (e.g. package or user manual).

5.3 The Office of NBTC will issue labels to supplier as requested.

5.3.1 Required documents (application for labels)

	Detail	Remark (✓=Yes) (×=No)
1	Eligibility documents (copy of juristic person's registration/copy of national ID card)	
2	Completely filled application form (Chor-Gor 1)	
3	Document to prove number of equipment ordered (Performa invoice / order information)	

5.3.2 fee 1 Baht each (VAT not included)

5.3.3 application forms (Chor-Gor 01)

5.3.4 contact information

Radiocommunication Licensing Bureau

The Office of National Broadcasting and Telecommunications
Commission

87 Phaholyothin 8 Rd. (Soi Sailom)

Samsennai, Phayathai, Bangkok 10400

Tel. 0 2271 0151 – 60 ext. 717

Fax. 0 2278 3993

Email: standard@nbt.go.th

6. Supplier's self-labeling

6.1 Suppliers can ask for permission to issue and affix labels by themselves.

6.2 Applicant qualification

	Qualification Detail	Remark (✓=pass) (✗=fail)
1	being a juristic person registered under Thai law	
2	The equipment must have been registered or certified by office of NBTC, and the supplier shall be one of the following equipment's responsible person <ul style="list-style-type: none"> - equipment manufacturer - trademark/brand owner - subsidiary company in Thailand - authorized dealer 	
3	has been issued with supplier code from the office of NBTC	
4	be a relevant licensee under the laws on radiocommunications	

6.3 Required documents

	Detail	Remark (✓=pass) (✗=fail)
1	Eligibility documents (copy of juristic person's registration)	
2	Power of attorney	
3	Copy of relevant licenses under the laws on radiocommunications	
4	Labeling details	
	4.1 Equipment brand and model	
	4.2 NTC ID.	
	4.3 Amount of labeling	
	4.4 Duration of self labeling	
	4.5 Labeling position (in case of labeling on the equipment)	
	4.6 Evidence proving that labeling on equipment is inappropriate (in case of not labeling on equipment)	

6.4 contact information

Telecommunication Technology and Engineering Bureau
The Office of National Broadcasting and Telecommunications
Commission
87 Phaholyothin 8 Rd. (Soi Sailom)
Samsennai, Phayathai, Bangkok 10400
Tel. 0 2271 0151 – 60 ext. 321, 322
Fax. 0 2279 2273
Email: standard@nbtc.go.th

7. Compliance wording

7.1 Supplier has an obligation to provide compliance wording (stating compliance with NBTC technical standard or technical requirement), using the following text:

“This telecommunication equipment conforms to technical standard NTC/NBTC TS”

or

“This telecommunication equipment conforms to NTC/NBTC technical requirement”

7.2 In addition, compliance wording stating compliance with NBTC notification on EMF exposure standard (NTC TS 5001-2550) and a notification on rules and measures for regulating EMF exposure to human must also be provided, using the following text:

Type 1. Radiocommunication equipment operating within 20 cm from human body in normal operating condition. (e.g. handheld cellular mobile terminal)

“This telecommunication equipment has Specific Absorbtion Rate (SAR) ... W/kg which conforms to NTC EMF exposure standard”

Type 2. Radiocommunication equipment operating further away more than 20 cm from human body in normal operating condition (e.g. cellular mobile terminal installed in vehicle)

“This telecommunication equipment has EMF radiation conforms to NTC EMF exposure standard

7.3 These compliance wordings shall be shown on package, user manual, or leaflet distributed together with the equipment.

8. Supplier's Declaration of Conformity: SDOC

8.1 In case where NTC/NBTC had prescribed technical standard or requirement, but the NTC/NBTC does not require the equipment to be registered or certified, supplier has an obligation to provide written attestation that the equipment conforms to such standard or requirement using Supplier's Declaration of Conformity (SDoC) form.

8.2 Document required to be submitted to the Office of NBTC

	Detail	Remark (✓=Yes) (✗=No)
1	Completely filled SDoC form	
2	EMF Declaration of Conformity (DoC) form and supporting documents (as applicable – see Section 12)	

8.3 Supporting documents required to be kept by supplier

	Detail	Remark (✓=Yes) (✗=No)
1	Copy of SDoC form	
2	Product Catalog	
3	Technical Specification	
4	test results/test report/inspection report proving compliance with technical standard or technical requirements	
5	test results/test report/Calculation proving compliance with EMF exposure requirements (as applicable – see Section 12)	

8.4 Compliance wording

8.4.1 Supplier may provide compliance wording, using the following text:

“This telecommunication equipment conforms to technical standard NTC/NBTC TS”

or

“This telecommunication equipment conforms to NTC/NBTC technical requirement”

8.4.2 This compliance wording, if provided, can be shown on package, user manual, or leaflet distributed together with the equipment.

9. Supplier's rights and obligations

9.1 Supplier has the rights to manufacture, sell, or import telecommunication equipment which has the same technical characteristics as the registered or certified equipment. However this registration or certification is not an exclusive right for the requested supplier.

9.2 Suppliers are obliged to be responsible only for telecommunication equipment they make, sell, or import.

9.3 Supplier shall notify the Office of NBTC in case that the technical characteristic of telecommunication equipment has been modified to be different from the details specified in the registration or certification. The modification in question can be categorized into 2 types:

- The modifications which have no effect on equipment conformity against standard/requirement. In this case, repeating conformity assessment is not required.

- The modifications which have effect on equipment conformity against standard/requirement. In this case, the equipment shall be re-assessed before they can be manufactured, sold, or imported. Example of such modifications include

- modifications of transmitting antenna
- modifications of transmitting power or radiation characteristics
- modification of interface card
- addition of interface card

9.4 Supplier shall be responsible in case it has been found that the equipment has been modified without prior approval, or the equipment has been manufactured/imported

/sold with significantly different technical characteristics from ones previously stated when registered/certified.

9.5 Supplier may be liable for any damage caused by an unsafe product according to other relevant laws.

10. Enforcement measures

The Office of NBTC will conduct post-market enforcement measures by using one or more of following methods:

10.1 Inspection of compliance documents from supplier.

10.2 Inspection of label and compliance wording requirement at point of sale.

10.3 Random inspection and compliance testing of equipment.

10.4 Complaint from customer or other suppliers

10.5 If a supplier is found to breach or violate the regulatory requirements, the Office may:

10.5.1 Issue written warning.

10.5.2 Order the supplier to modify, revise, or stop selling/using the equipment found to be not in conformity with technical standard/requirements.

10.5.3 Recommend to the NBTC for withdrawal of conformity assessment result.

10.5.4 Fine or judicial proceedings of the accused.

Annex

Classification of Equipment according to Technical Standard and its conformity assessment

Technical Standard/Technical Requirement	Scope covered	Equipment classification	Type of conformity assessment	
Land Mobile Equipment				
NTC TS 1001-2553	Radiocommunication equipment operating in land mobile service in the VHF/UHF frequency band	Class B	Base station	8
			Mobile station/Handheld	5
NTC TS 1002-2553	Radiocommunication equipment for general public operating in the 78 MHz or 245 MHz frequency band	Class B	Base station	8
			Mobile station/Handheld	5
NTC TS 1009-2549	Digital trunked radio system in land mobile service	Class B	Base Station	8
			Mobile Station/Handheld	5
NTC TS 1024-2552	Land Mobile Radiocommunication Equipment in the VHF/UHF Frequency Band for Voice and/or Data Communications	Class B	Base Station	8
			Mobile Station/Handheld	5
Maritime Radiocommunication Equipment				
NTC TS 1021-2550	Radiocommunication equipment operating in maritime mobile service in	Class B	Coast Station	8

Technical Standard/Technical Requirement	Scope covered	Equipment classification	Type of conformity assessment	
	the VHF frequency band		Ship Station/Handheld	5
NTC TS 1020-2550	27 MHz CB radiocommunication equipment on board ship	Class B	5	
NTC TS 1022-2552	Maritime Mobile Radiocommunication Equipment in the MF/HF Frequency Band	Class B	Ship Station	5
Aeronautical Mobile Equipment				
NTC TS 1003-2553	Radiocommunication equipment operating in aeronautical mobile service in the VHF frequency band	Class B	Base station	8
			Mobile station/Handheld	5
NTC TS 1023-2552	VHF Air-Ground Digital Link (VDL) Equipment	Class B	Base station	8
Amateur Radiocommunication Equipment				
NTC TS 1018-2550	Radiocommunication equipment in amateur service	Class B	Base station	8
			Mobile station	5
Cellular Mobile Equipment				

Technical Standard/Technical Requirement	Scope covered	Equipment classification	Type of conformity assessment		
NTC TS 1004-2553	User equipment operating in cellular land mobile service using GSM technology	Class B	6		
NTC TS 1008-2549	Base stations/repeaters operating in cellular land mobile service using GSM technology	Class B	8		
NTC TS 1014-2552	Base Station and Repeater in International Mobile Telecommunications (IMT) Service Using IMT-2000 CDMA Direct Spread Technology	Class B	8		
NTC TS 1015-2552	User equipment operating in International Mobile Telecommunications (IMT) Service Using IMT-2000 CDMA Direct Spread Technology	Class B	6		
NTC TS 1016-2549	Base stations/repeaters operating in cellular land mobile service using IMT-2000 CDMA Multi-Carrier (cdma2000) technology	Class B	8		
NTC TS 1017-2549	User equipment operating in cellular land mobile service using IMT-2000 CDMA Multi-Carrier (cdma2000) technology	Class B	6		
Satellite communication equipment					
NTC TS 1019-2551	Antenna of earth station in fixed-satellite service using geo-stationary orbit	Class A	1		
NTC TS 005-2548	Radiocommunication equipment in Global Mobile Personal Communications by Satellite (GMPCS) system	Class A	Power <= 100mW		1
			Power > 100mW	Distance from body < 20cm	2

Technical Standard/Technical Requirement	Scope covered	Equipment classification	Type of conformity assessment			
				Distance from body >= 20cm		3
Other radiocommunication equipment permitted by NTC.						
NTC TS 1011-2549	Vehicle radar in the frequency band 76-77 GHz	Class A	Power <= 100mW			1
			Power > 100mW			3
NTC TS 1010-2550	Radio Frequency Identification (RFID) equipment	Class A /SDoC (as applicable)	< 135 kHz	Power <= 100mW		9
				100mW < Power < 150mW	Dist. From body < 20cm	10
					Dist. From body >= 20cm	11
				0.15W < Power > 7.5W	Dist. From body < 20cm	2
					Dist. From body >= 20cm	3
			13.533-13.567 MHz	Power < 10mW		9
				10mW < Power <= 100mW		1
				100mW < Power < 1W	Dist. From body < 20cm	2
					Dist. From body >= 20cm	3
			433.05-434.79 MHz			9
			920-925 MHz	Power <= 100mW		9
				100mW < Power < 0.5W	Dist. From body < 20cm	10
					Dist. From body >= 20cm	11

Technical Standard/Technical Requirement	Scope covered	Equipment classification	Type of conformity assessment					
					20cm			
				0.5W < power < 4W	Dist. From body < 20cm	2		
					Dist. From body >= 20cm	3		
			2.4-2.5 GHz					9
			5 GHz	Power <= 100mW		9		
				Power > 100mw	Dist. From body < 20cm	10		
					Dist. From body >= 20cm	11		
NTC TS 1013-2552	Broadband Wireless Access (BWA) radiocommunication equipment using IMT-2000 OFDMA TDD WMAN Technology	Class B	Base Station				8	
			CPE	Power <= 100mW		5		
				Power > 100mW		7		
NTC. Technical Requirement	Wireless radio broadcast system 420.2 MHz	SDoC	9					
NTC. Frequency Plan Technical Requirement	Microwave Fixed Link Equipment	SDoC	12					
Low Power Radiocommunication Equipment & Short Range Device								
NTC. Notification on License-Exempt equipment/station clause 2 (2)	Wireless Microphone 88-108 MHz / 165-210 MHz	SDoC	9					
NTC TS 006-2548	Wireless microphones 794-806 MHz	Class A	1					
NTC Notification on License-Exempt equipment/station	Cordless Phone 1.6-1.8 MHz / 54-74 MHz	SDoC	9					

Technical Standard/Technical Requirement	Scope covered	Equipment classification	Type of conformity assessment		
clause 2 (3)					
NTC Notification on License-Exempt equipment/station clause 3 (5)	Cordless Phone 1900-1906 MHz	SDoC	9		
NTC Technical Requirement	PCT Phone 1906.1-1918.1 MHz	SDoC	9		
NTC TS 007-2548	Radio control operating in 72 MHz	Class A	Power <= 100mW		1
			Power > 100mW		3
NTC Notification on License-Exempt equipment/station clause 2 (5)	SRD 135 kHz (except RFID)	SDoC	Power <= 100mW	9	
			Power > 100mW	Distance from body < 20cm	10
				Distance from body >= 20cm	11
NTC Notification on License-Exempt equipment/station clause 2 (6)	SRD 13.56 MHz (except RFID)	SDoC	9		
NTC Notification on License-Exempt equipment/station clause 2 (7) or 3 (6)	SRD 27 MHz	SDoC	Power <= 100mW	9	
			Power > 100mW	Distance from body < 20cm	10
				Distance from body >= 20cm	11
NTC Notification on License-Exempt equipment/station clause 2 (8)	SRD 30-50 MHz	SDoC	9		
NTC Notification on License-Exempt equipment/station clause 2 (9)	SRD 300-500 MHz	SDoC	9		
NTC TS 1012-2551	Broadband Wireless Access (Radio Local Area Network) radiocommunication	SDoC	2.4 GHz band		9

Technical Standard/Technical Requirement	Scope covered	Equipment classification	Type of conformity assessment		
	equipment		5 GHZ Band Power <= 100mW	9	
			5 GHZ Band Power > 100mW	11	
NTC Notification on License-Exempt equipment/station clause 2 (10)	SRD 2.4 GHz / Bluetooth (except WLAN)	SDoC	9		
NTC Notification on SRD 5 GHz	SRD 5 GHz (except WLAN)	SDoC	Power <= 100mW	9	
			Power > 100mW	Distance from body < 20cm	10
				Distance from body >= 20cm	11
NTC Notification on License-Exempt equipment/station clause 2 (4)	Short range radar devices 5.725-5.875 / 10-10.6 / 24.05-24.25 / 76-81 GHz	SDoC	9		
NTC Notification on License-Exempt equipment/station clause 3 (3)	Audio/Video transmission equipment	SDoC	9		
Wireline Equipment					
NTC TS 2001-2550	Optical Communication System	SDoC	9		
NTC TS 2002-2551	Narrowband PLC equipment	SDoC	9		
	Broadband PLC equipment (In-building)	Class A	1		
NTC TS 3001-2550	Electromagnetic Compatibility (EMC)	SDoC	CISPR 22 edition 4.0:2003		
NTC TS 4001-2550	Electrical Safety		IEC 60950-1		

1) Class A without DoC

- Submit application for registration with NBTC
 - i. Test results as per technical standard (from accredited lab) or Approval Certificate/Certificate of Conformity
- Affix Label displaying NTC ID.
- Display compliance wording in manual/package/leaflet (against technical standard only)

2) Class A with DoC (SAR) (type 1)

- Submit application for registration with NBTC
 - i. Test results as per technical standard (from accredited lab) or Approval Certificate/Certificate of Conformity
 - ii. Completed DoC form and SAR test result (from accredited lab)
- Affix Label displaying NTC ID.
- Display compliance wording in manual/package/leaflet (against technical standard and RF exposure standard)

3) Class A with DoC (EMF) (type 2)

- Submit application for registration with NBTC
 - i. Test results as per technical standard (from accredited lab) or Approval Certificate/Certificate of Conformity
 - ii. Completed DoC form and EMF test result (from accredited lab) or Calculation
- Affix Label displaying NTC ID.
- Display compliance wording in manual/package/leaflet (against technical standard and RF exposure standard)

4) Class A with EMF assessment (type 3)

- Submit application for registration with NBTC
 - i. Test results as per technical standard (from accredited lab) or Approval Certificate/Certificate of Conformity
- Affix Label displaying NTC ID.
- Conduct EMF assessment and submit results to NTC before installation

5) Class B without DoC

- Submit application for certification with NBTC
 - i. Test results as per technical standard (from ISO-17025 accredited lab)
- Affix Label displaying NTC ID.
- Display compliance wording in manual/package/leaflet (against technical standard only)

6) Class B with DoC (SAR) (type 1)

- Submit application for certification with NBTC
 - i. Test results as per technical standard (from ISO-17025 accredited lab)
 - ii. Completed DoC form and SAR test result (from accredited lab)
- Affix Label displaying NTC ID.
- Display compliance wording in manual/package/leaflet (against technical standard and RF exposure standard)

7) Class B with DoC (EMF) (type 2)

- Submit application for certification with NBTC
 - i. Test results as per technical standard (from ISO-17025 accredited lab)
 - ii. Completed DoC form and EMF test result (from accredited lab) or Calculation
- Affix Label displaying NTC ID.
- Display compliance wording in manual/package/leaflet (against technical standard and RF exposure standard)

8) Class B with EMF assessment (type 3)

- Submit application for certification with NBTC
 - i. Test results as per technical standard (from ISO-17025 accredited lab)
- Affix Label displaying NTC ID.
- Conduct EMF assessment and submit results to NTC before installation

9) SDoC without DoC

- Submit completed SDoC form to NBTC
- Required test results proving conformity (kept by supplier)
 - i. Test results as per technical standard

10) SDoC with DoC (SAR) (type 1)

- Submit completed SDoC form to NBTC
- Submit completed DoC form to NBTC
- Required test results proving conformity (kept by supplier)
 - i. Test results as per technical standard
 - ii. SAR test result

11) SDoC with DoC (EMF) (type 2)

- Submit completed SDoC form to NBTC
- Submit completed DoC form to NBTC
- Required test results proving conformity (kept by supplier)
 - i. Test results as per technical standard
 - ii. EMF test result or calculation

12) SDoC with EMF assessment (type 3)

- Submit completed SDoC form to NBTC
- Required test results proving conformity (kept by supplier)
 - i. Test results as per technical standard
- Conduct EMF assessment and submit results to NBTC before installation